

VERSALIFT

VDTL160-FZ

Pickup mounted
telescopic platform



Available for class B
driving licence



LMC controls with
variable outreach



Emergency lowering
controls at the pedestal



Turret tailswing within
the mirrors



1 kV certified low
voltage insulation



VERSALIFT

A **TIME** MANUFACTURING COMPANY

VDTL160-FZ - Ford Ranger

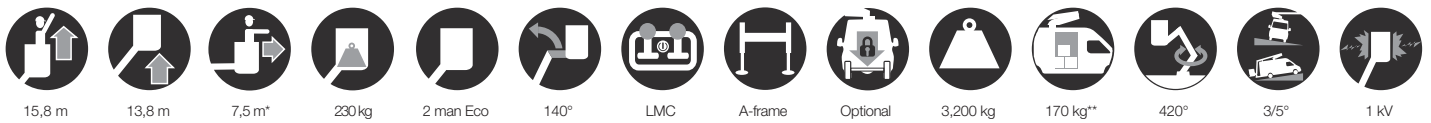


Emergency operation from ground (valve-bank mounted on pedestal)

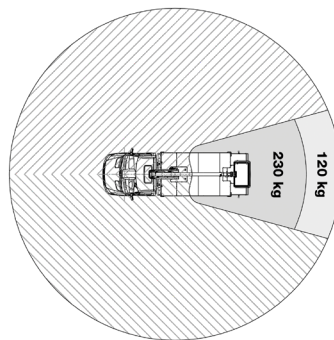
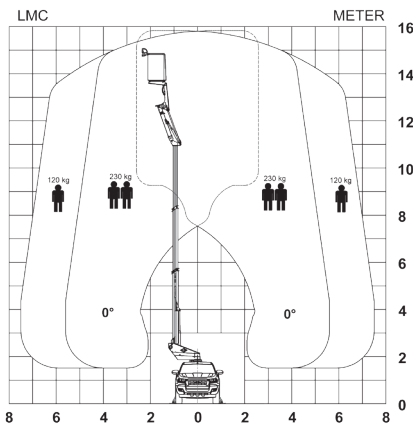
Better performance (additional working height and outreach)

Designed to support up to 265 kg (depending on the stability of the vehicle)

■ Length: 6,625 mm ■ Height: 2,555 mm ■ Wheelbase: 3,220 mm



Diagramme(s)



Options

- Outrigger pads with holders
- Hydraulic axle locking system
- Flashing lights on the roof
- Aluminium cabinets for the chassis
- Safety stripes (red/white)
- Reversing camera
- Display in the upper control panel
- Stow guide & limited working area without outriggers



The shaped profile ultra high strength steel booms provide improved rigidity, stiffness and performance



Ground level emergency lowering from the chassis (pedestal mounted valve bank)



Aluminium cabinets for the chassis (optional)



LMC (Load Moment Controls): Variable outreach and up to 2 actions at a time (1 per joystick)

Notes

Technical information is subject to change without prior notice. Images may show optional equipment. Installations and/or options may not be available in your specific region.

* Depending on the vehicle.

** Max payload with a driver, a passenger and a full tank of fuel (220 kg added to the installation weight).

Distributor

Versalift International
Soendervang 3, 9640 Farsoe
Denmark

+45 9863 2433
sales@versalift.dk
versaliftinternational.com